



COMIC[®]

Child Oriented Mental Health Innovation Collaborati

Newsletter!

Spring 24'

Welcome to the Spring COMIC newsletter!

Happy Spring all!

Welcome to our newest newsletter, and welcome all our new members! As we have had a lot of new sign ups we thought it best to reintroduce our selves. We are COMIC, a child mental health research team focusing on researching what really matters to children and young people. We conduct research with children who have lived experiences to ensure we are researching what really matters in the best way possible.

We have had an exciting few months filled with new research ideas, fun events and conferences where we met so many of you and were able to discuss all things mental health and best research practice!

2 research ready Schools

9

youth and community groups across yorkshire

140+

Young people

Join our YPAN!

Sign up individually or Join as part of your youth group!

Email Jamie.telford@enhs.net If you are interested!



COMIC YPAN

2

Research ready schools

2

CAMHS inpatient units

10

Youth community groups

The COMIC YPAN (Young People's Advisory Network) has been growing since our last update with one new 6th form college added and a new inpatient unit to our network just to name a couple! We are now running regular meetings with the majority of the members to continue our outreach and research.

We are now focusing on diversifying our YPAN by reaching out further than ever before in to the farthest reaches of Yorkshire. If you know of anyone that would interested in getting involved please ask them to email Jamie at jamie.telford1@nhs.net

If you are a part of the YPAN please scan me!



JOIN OUR NEW

Young person social media team

Are you interested in mental health research and gaining experience in social media content creation?



We need volunteers to help create content for our social media channels

Have your say in how social media is run in COMIC

Are you 15 - 18 years old?

If you're interested in getting involved email us!

jamie.telford1@nhs.net

A chance to be creative and meet other young people

Volunteers can access CV support, learning about research and a reference for future roles

What have we been up to?

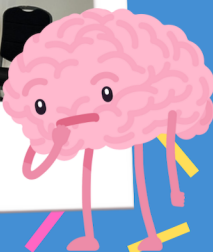


Zoe and Jamie attended the EMRI (Ethnic Minority Research Inclusion) Research For All event - a great day packed with fantastic groups doing great work!

A few members of the team recently attended the AWARE #WAAD event where we showcased our work and how to get involved whilst networking with so many amazing people!



Agnes attended the Quality and Safety in Healthcare forum to discuss the work the YPAN has done on co-producing mental health research! Watch Agnes speak about the YPAN [here](#)



What have we been up to?

During Children's Mental Health Week in February we visited a local school to discuss mental health, what we do as researchers, and discuss some of our studies. We also asked what everyone would like to see studied and we had a lot of requests for Taylor Swift!



Back in February COMIC also attended CHORAL's launch event where we networked with so many fantastic professionals from all sectors of healthcare. We even had the honor of hearing Leeds Children's Mayor speak about issues children are facing in Leeds.

We also attended our annual Research Forum where Ellen gave an exciting presentation on the CONIFAS which had all researchers eager to find out more and what we are doing next!



Recent events!

COMIC family event 28th March

In March we held our second family event at York Explore Library where we showcased many of our studies as well as the fun activities we use to conduct our research!

We had a fantastic day talking to lots of 'honorary researchers' about what research is and how they can get involved. We also spoke with many community groups and individuals who were interested in getting involved with our YPAN!



Interested in getting involved?
Get in touch!
research.comic@nhs.net



Grateful For



Your Help!

Study Updates

VOICES

VOICES is a study working on finding the best ways to get non-speaking autistic children involved in research. We are currently in talks with some community groups to begin this! If you are interested in getting involved, contact sophie.schumann@nhs.net

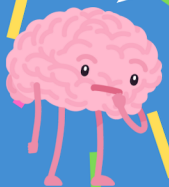
EDIP

Phase 2 of the EDIP study is now complete! The COMIC team ran 2 PPI workshops with parents and young people with lived experience of eating disorders to help us design our qualitative interviews. We had a total of 5 parents and 10 young people attend, thank you! We're very excited to move onto phase 3 next month when we will start the interviews!

If you are interested in getting involved in our studies please email jamie.telford1@nhs.net

THANK
YOU
😊

Wow it's
really quiet
in here!



We are currently working toward starting all of our studies as this newsletter is going out meaning unfortunately we don't have a lot of updates to give you!

Keep an eye on our socials to see when you can get involved with our exciting research!



REMINDER

1ST-30TH APRIL
Stress awareness month



13TH-19TH MAY
Mental health awareness week



1ST-30TH JUNE
PRIDE!
month



[comic.research](https://www.instagram.com/comic.research)



[@COMICResearchUK](https://twitter.com/COMICResearchUK)

